



## What You Need to Know

- Began in 1974.
- Instrumental in the beginning of the state and national soybean checkoffs.
- The board is 9 elected farmers directors.
- Important to the soybean industry by influencing decision makers on behalf of the soybean farmers.

## Policy Priorities

- **Trade Expansion**  
Soybeans are Michigan's #1 agricultural export. Trade is critical to agriculture. MSA and the American Soybean Association (ASA) work to promote partnerships and remove barriers to increase trade opportunities.
- **Soy Biobased Products**  
MSA supports legislation promoting the use of biobased products and biodiesel.
- **Transportation and Infrastructure**  
MSA and ASA work to ensure infrastructure critical to agriculture, including locks, dams, ports, roads, bridges and railroads, are included in funding. Reliability of utilities such as gas, electric and broadband are also important.
- **Farm Bill**  
ASA is working with congress to implement the 2018 Farm Bill.
- **Environmental Regulations**  
MSA and ASA work to support voluntary programs to achieve water quality and environmental goals. They work to make sure that regulatory decisions are based on sound science. MSA also aims to protect the interests of farmers and will advocate on farmer's behalf of policy stemming from the Western Lake Erie Basin algal blooms.
- **Aquaculture**  
MSA and ASA recognize aquaculture as an emerging market for soybeans and are working to develop an environmentally sound and economically sustainable aquaculture industry.

*The mission is to improve and advocate for the Michigan soybean industry, and is achieved through advocacy activities relevant to soybeans and agriculture.*



**Michigan Soybean  
Promotion Committee**  
*The Soybean Checkoff*  
michigansoybean.org

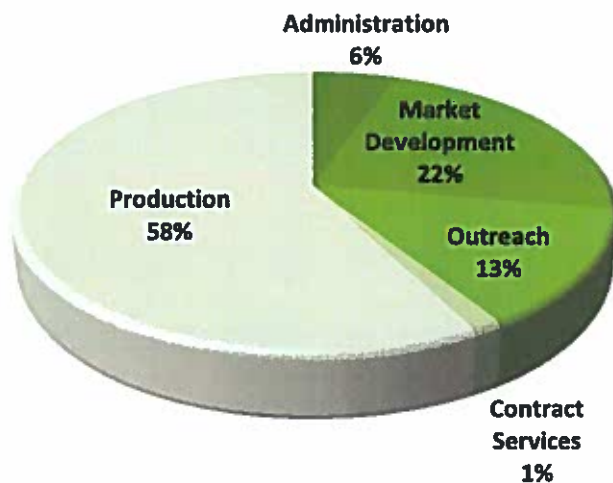


## What You Need to Know

- 1976 began the Michigan soybean checkoff program under P.A. 232.
- 1997 National Program began Soybean Research and Consumer Information Program (SPARC) managed by the United Soybean Board (USB).
- Based on the value of soybeans sold: for every \$100 .25 cents stays in Michigan and .25 cents to USB.
- Both programs invest in Research, Market Development and Outreach.
- \$1.67 billion to the states economy.
- 14,000 jobs.
- #1 agricultural export.
- All 12,000+ soybean farmers pay into the checkoff.
- The checkoff board is 7 governor-appointed farmer directors.
- 12<sup>th</sup> in soybean production nationally of 31 soybean producing states.
- Over 2 million acres planted and harvested each year.

## How Resources Are Used

### FY18 PROGRAM DISBURSEMENT



#### Production

*Research investment Nearly \$700,000*

- Production Management
- Soybean Breeding
- Water Quality and Irrigation
- Grower Communication

#### Market Development

- Trade Team Missions
- Soybean Genetic Marketing
- Promotion of Biodiesel and Biobased products

#### Outreach

- Influencer, Consumer and School Education
- College Scholarships
- Leadership Development

*The mission is to manage checkoff resources to increase return on investment for Michigan soybean farmers while enhancing sustainable soybean production.*